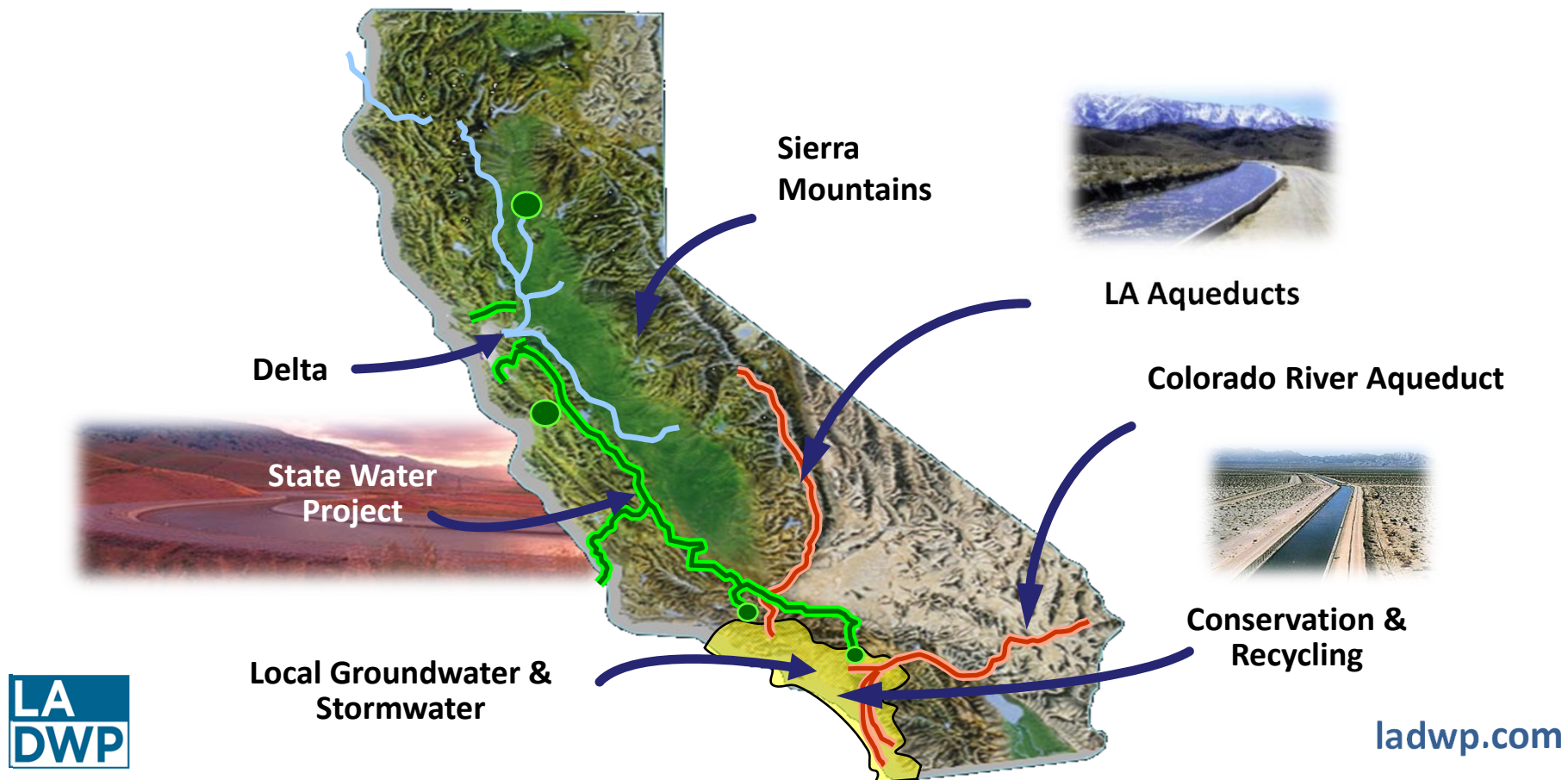




Operation NEXT Water Supply Program

Rafael Villegas, P.E.
Los Angeles Department of Water and Power

LA Water Sources



Move Towards Local Supplies

Imported water challenges:

- Seismic Vulnerability
- Climate Change
- Drought
- Variable Hydrology
- Environmental Restrictions
- Rising Costs



Operation NEXT Water Supply Program

Program Objective:
Recycle 100% of
supply from the
Hyperion Water
Reclamation Plant
by 2035.



Operation NEXT Video

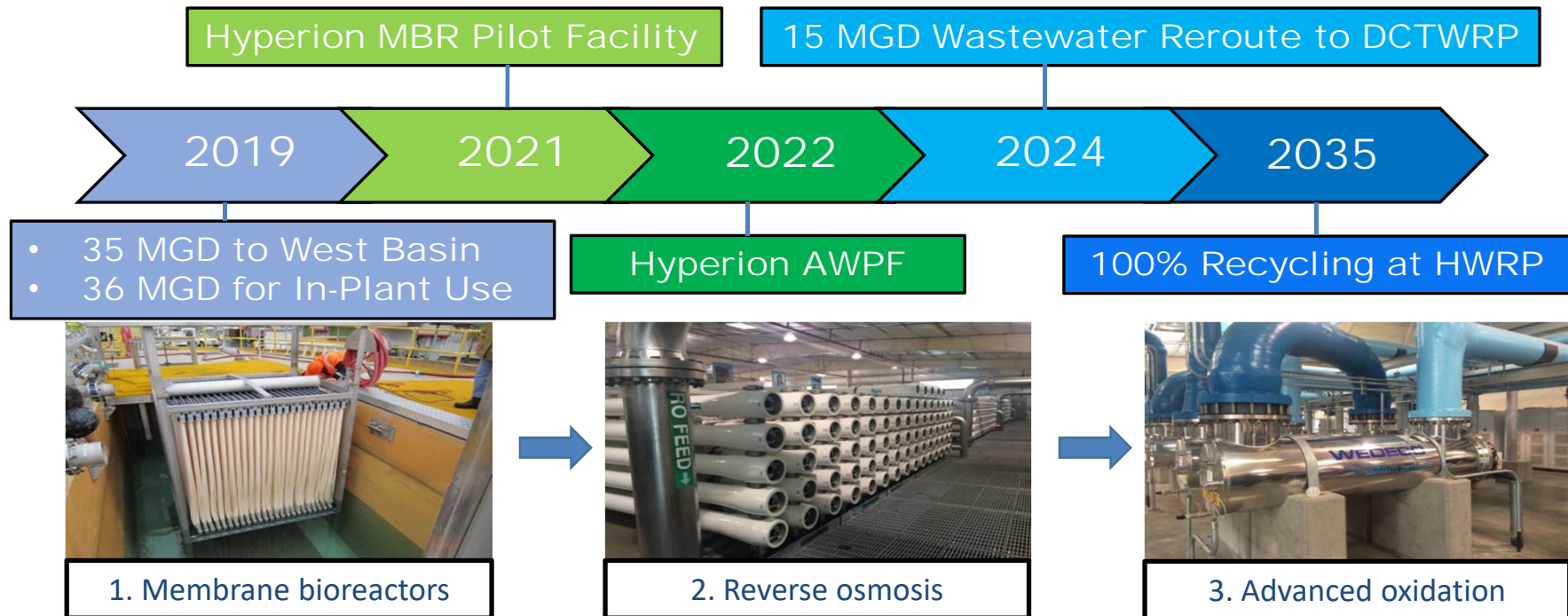
Partnership

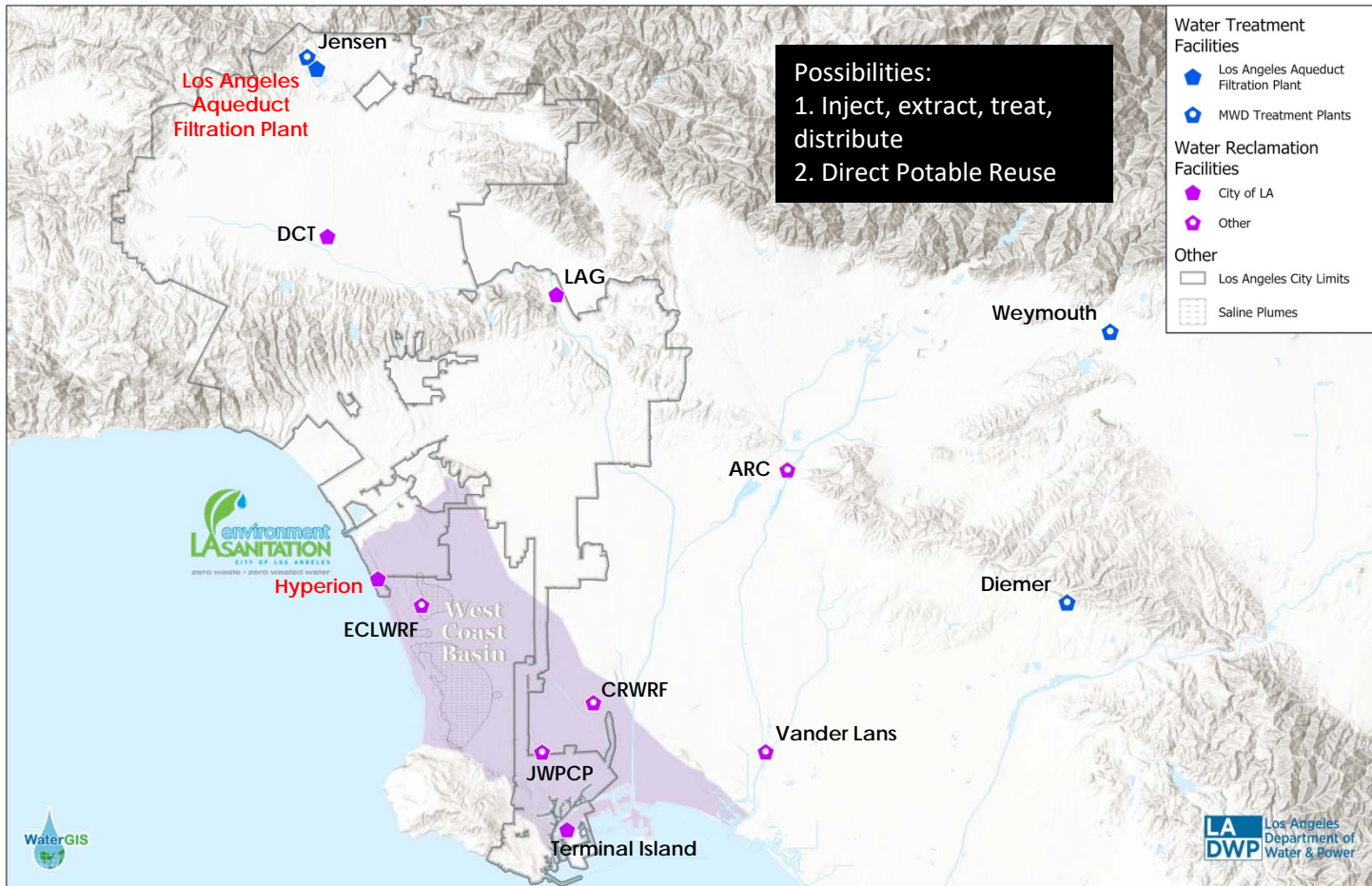


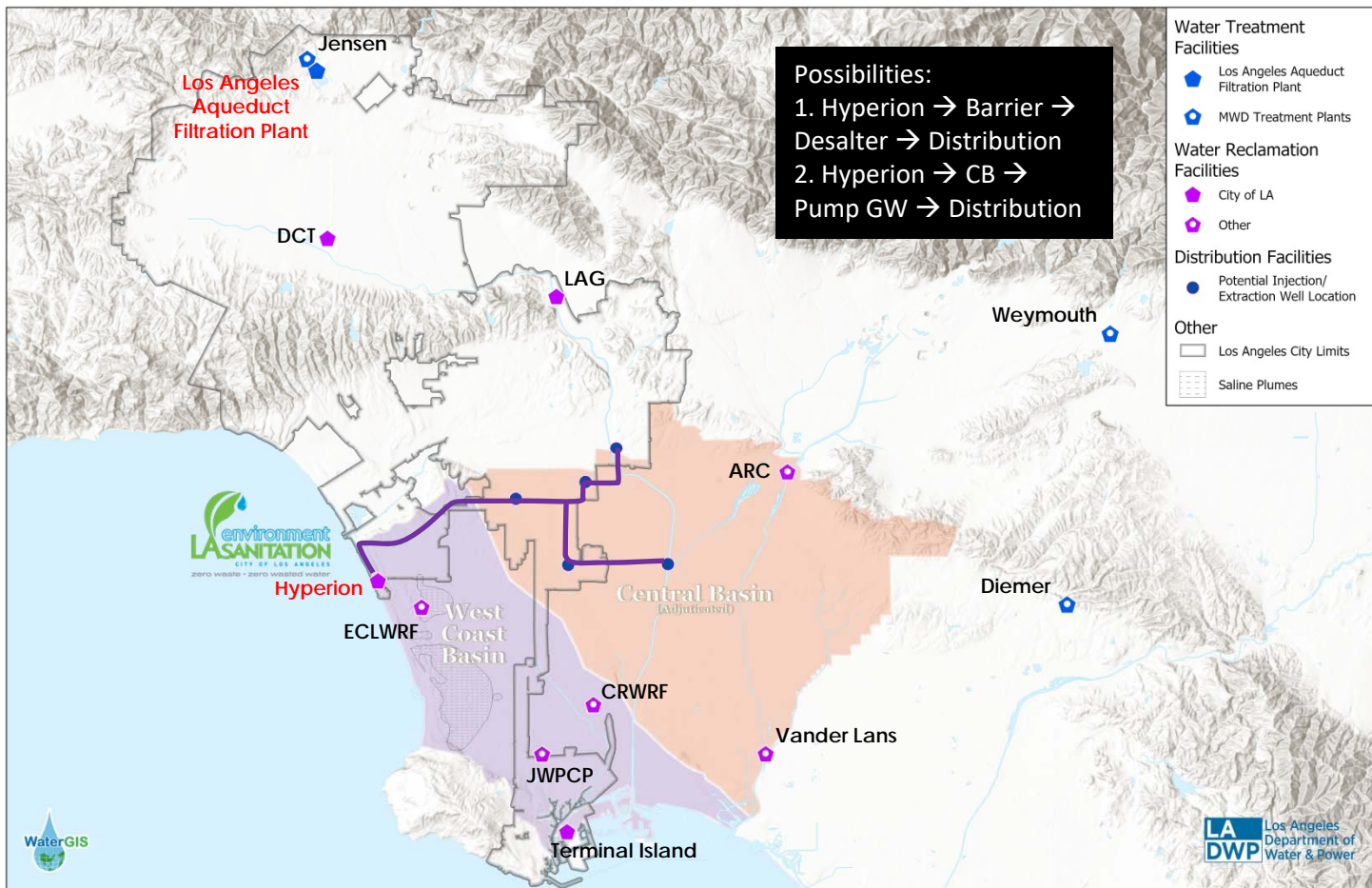
Hyperion Water Reclamation Plant

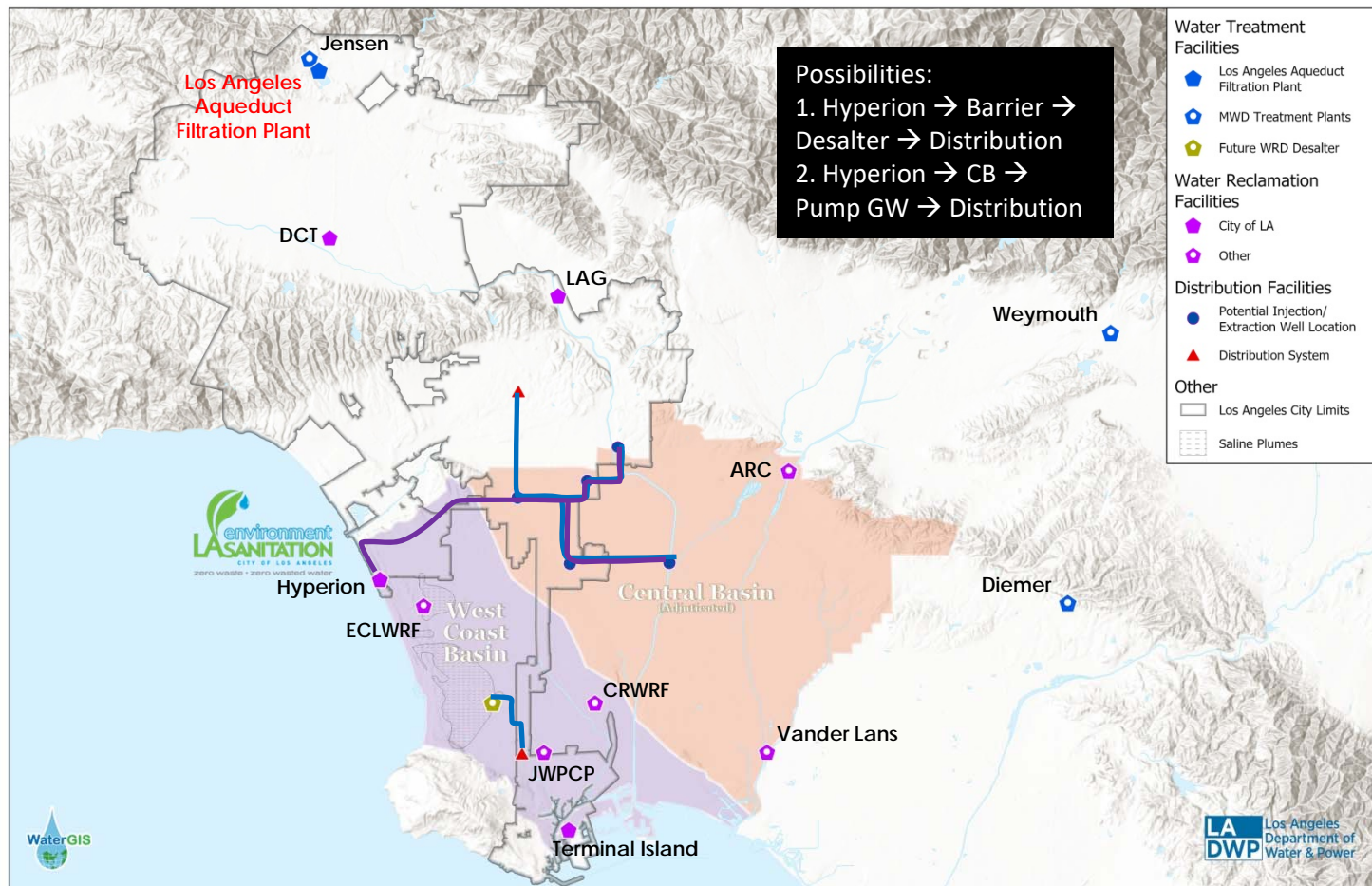


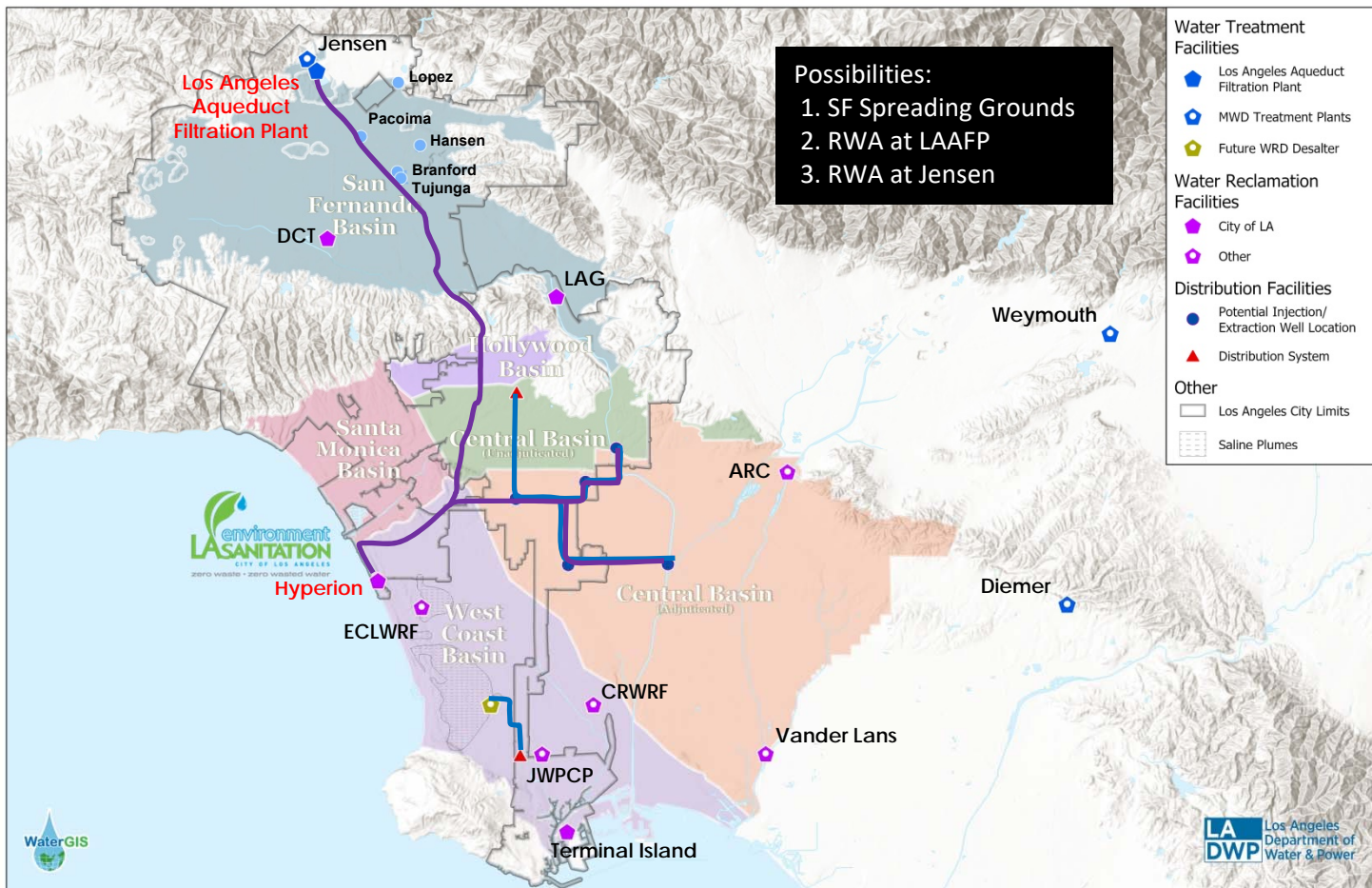
Hyperion Advanced Treatment

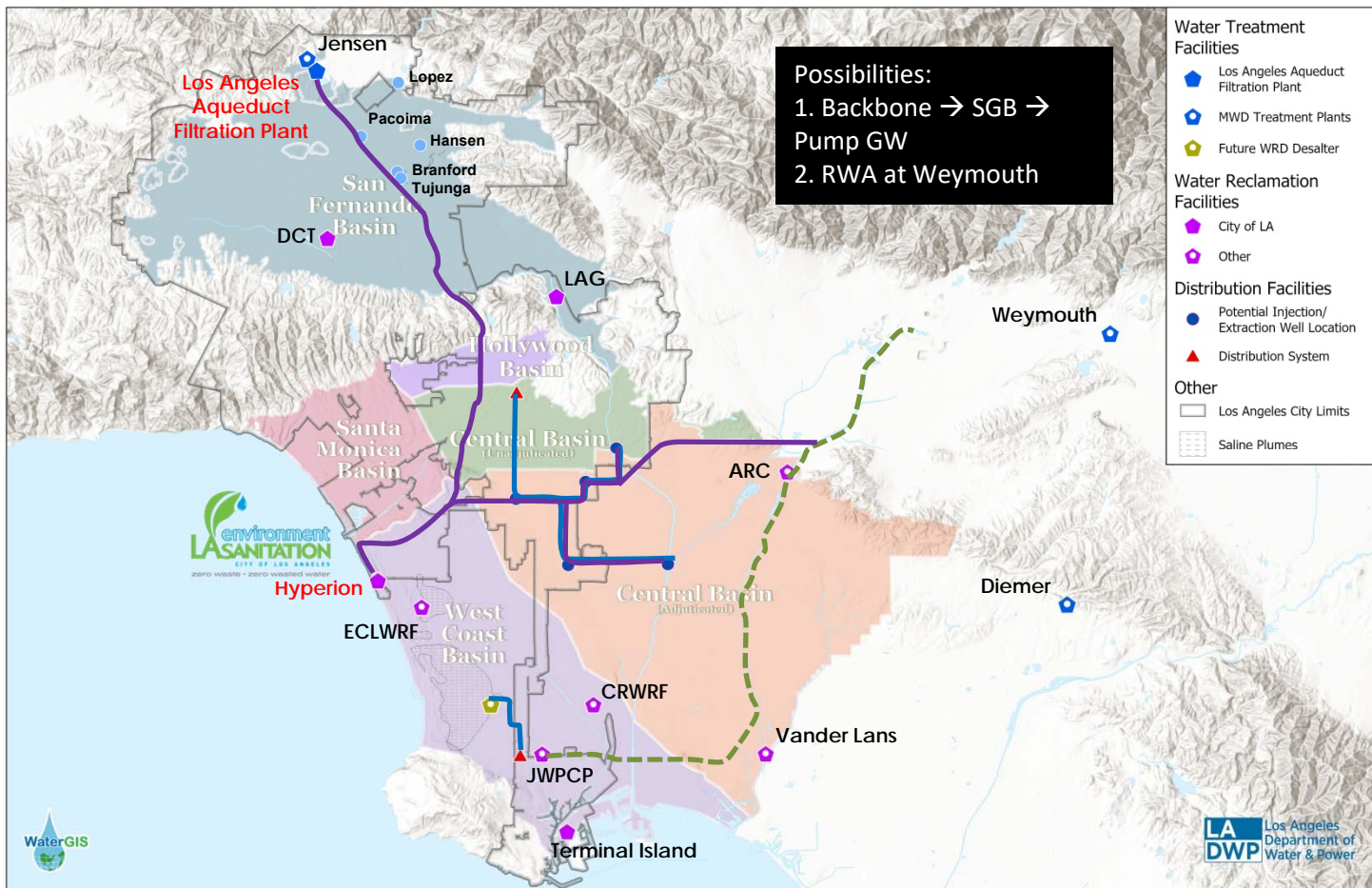












Infrastructure

- Hyperion
 - AWWPF (MBR, UV/AOP)
 - Site layout
- Conveyance
 - Pipeline
 - Pump Stations
 - Tunnels
- Well Fields
 - Injection/Extraction Wells
 - Groundwater Treatment
 - Real Estate
 - Integration into Distribution System



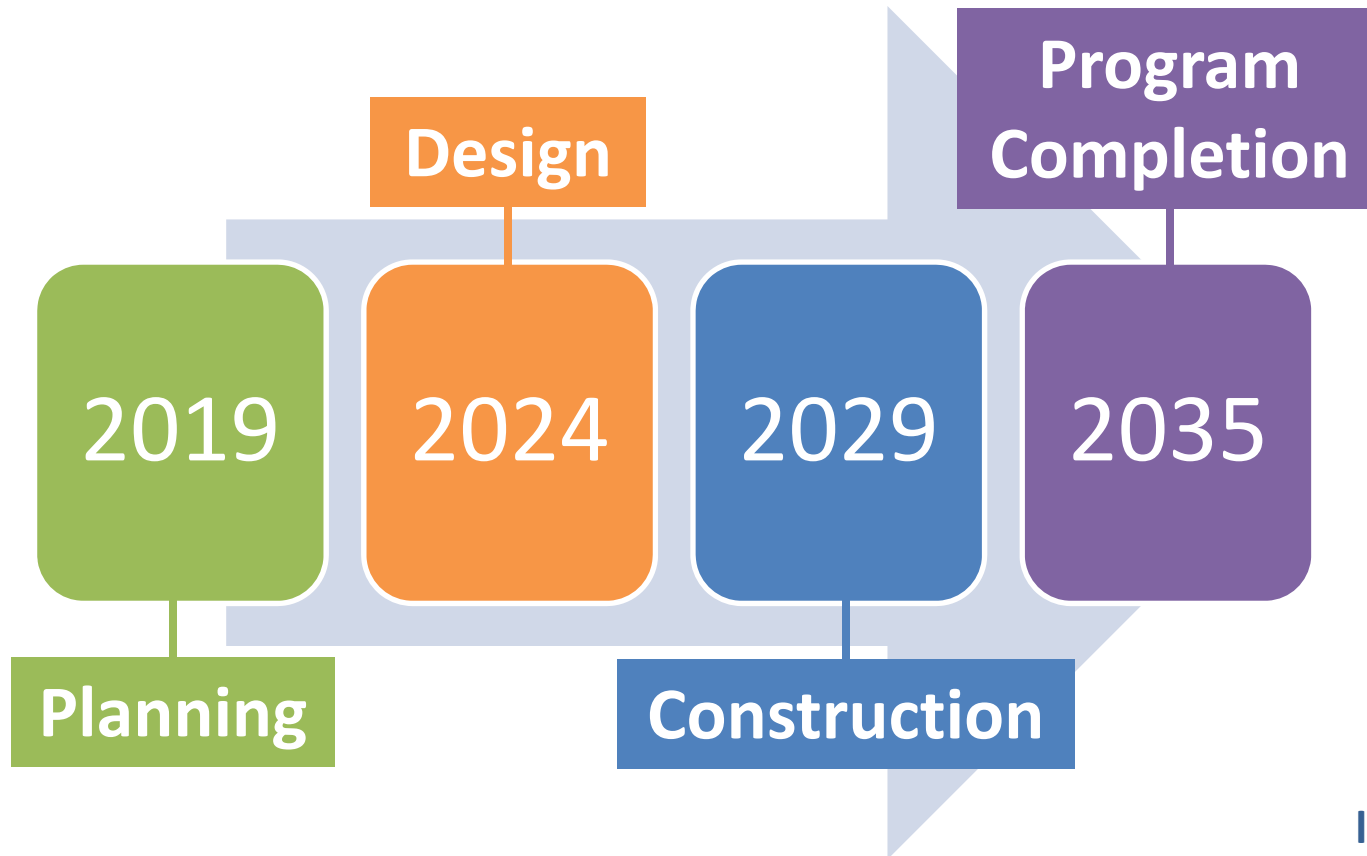
ladwp.com

Impacts on Water System

- Largest project since LA Aqueduct
- Fundamentally changes system operations
- Unconventional water source
- Third of City's demand
- Resource needs
- Complex groundwater governance



Program Schedule



Implementation Strategy / Program Management

- Provide cohesive oversight / vision of goals
- Build teams by resource needs
 - Planning, Treatment Technology
 - Infrastructure (treatment and conveyance)
 - Institutional Agreements
 - Environmental and Regulatory Approval
 - Public Outreach



Ongoing Efforts

- Coordination with partnering agencies (LASAN, WRD, MWD)
- Engaging Potential partners – Local Cities, Contract Agencies
- DPR Regulations
- Financial Plan
- Resource Planning
- Internal and Pilot Studies
- Community Engagement and Outreach Plan
- Programmatic EIR



Rafael Villegas, P.E., M.S.C.E.
Rafael.Villegas@ladwp.com
213-367-1289

