



Water Supply Update

MOU Meeting
May 7, 2022

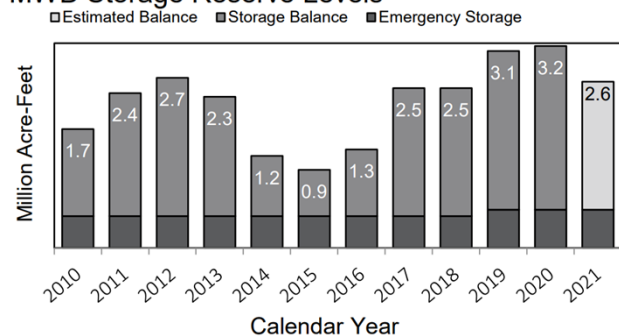
Water Supply Conditions

State Water Project
Peaked on January 17, 2022
17.2" water content
61% of normal April 1

LA Aqueducts
Peaked on January 14, 2022
15.1" water content
66% of normal April 1

Colorado River Basin
Peaked on March 18, 2022
13.3" water content
91% of normal April 1

MWD Storage Reserve Levels

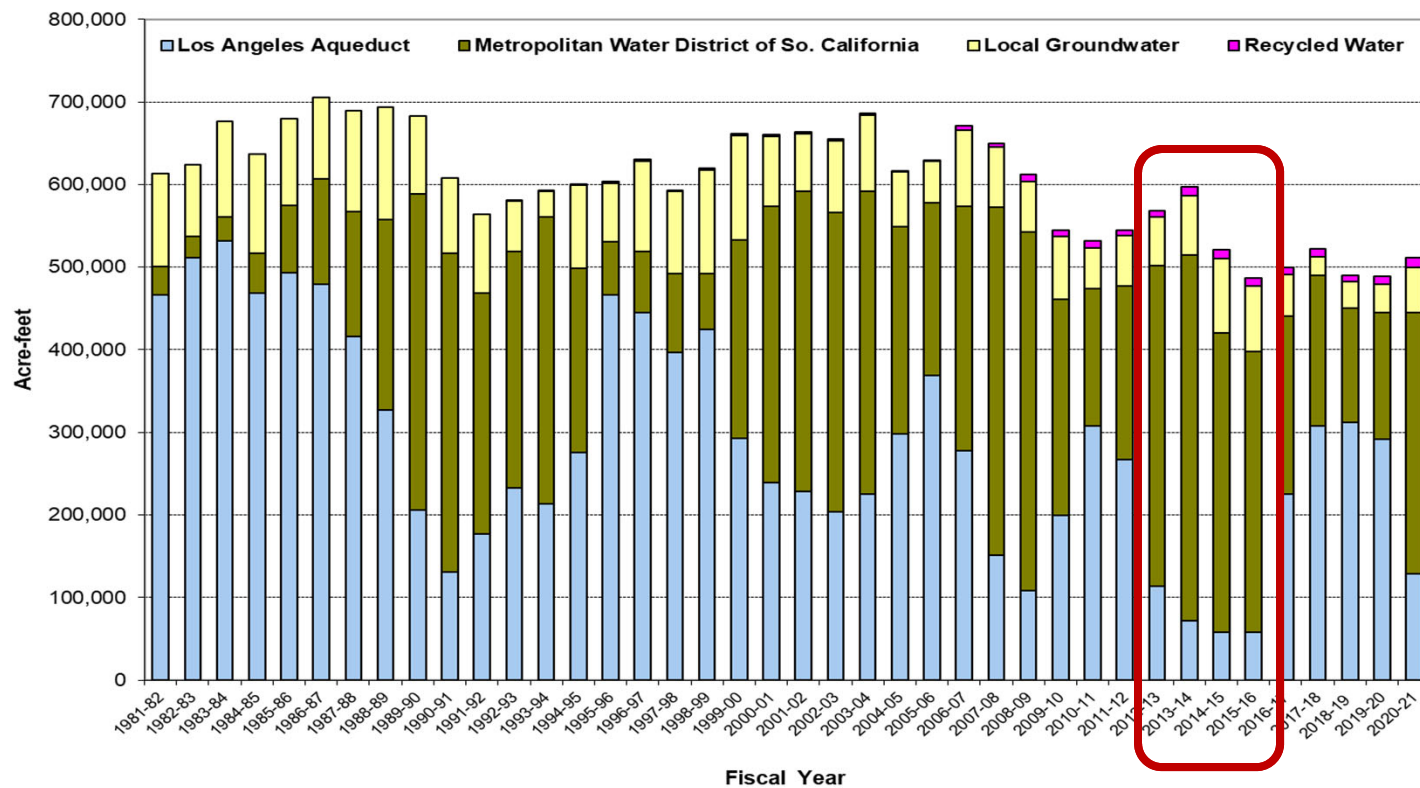


Colorado River Shortage

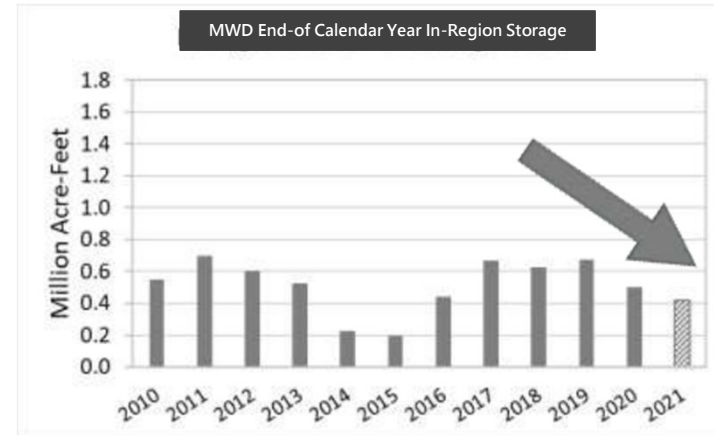
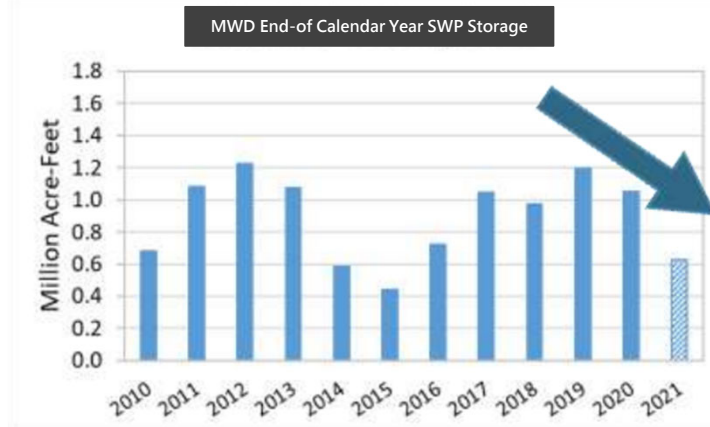
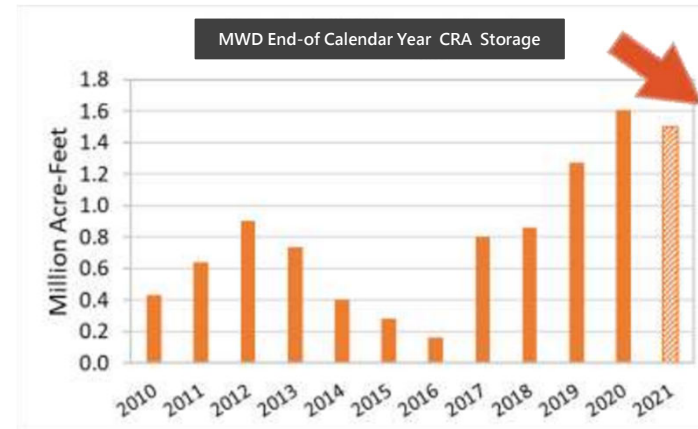
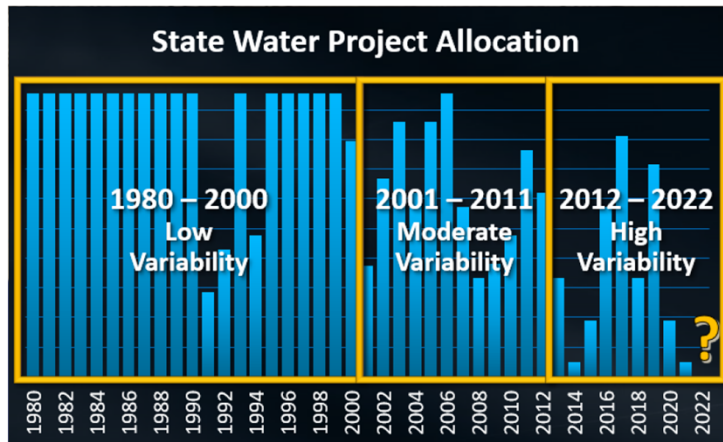
- First-ever shortage in Lower Colorado River Basin effective 2022; Lake Mead elevation dropped below 1,075' (currently at 1,053')
- Lake Powell is below critically low level of 3,525' (currently at 3,523')
 - Power Pool Elevation is 3,490'; Hydropower cannot be generated by Glen Canyon Dam
 - Reduced releases from Lake Powell lead to lower Lake Mead elevation



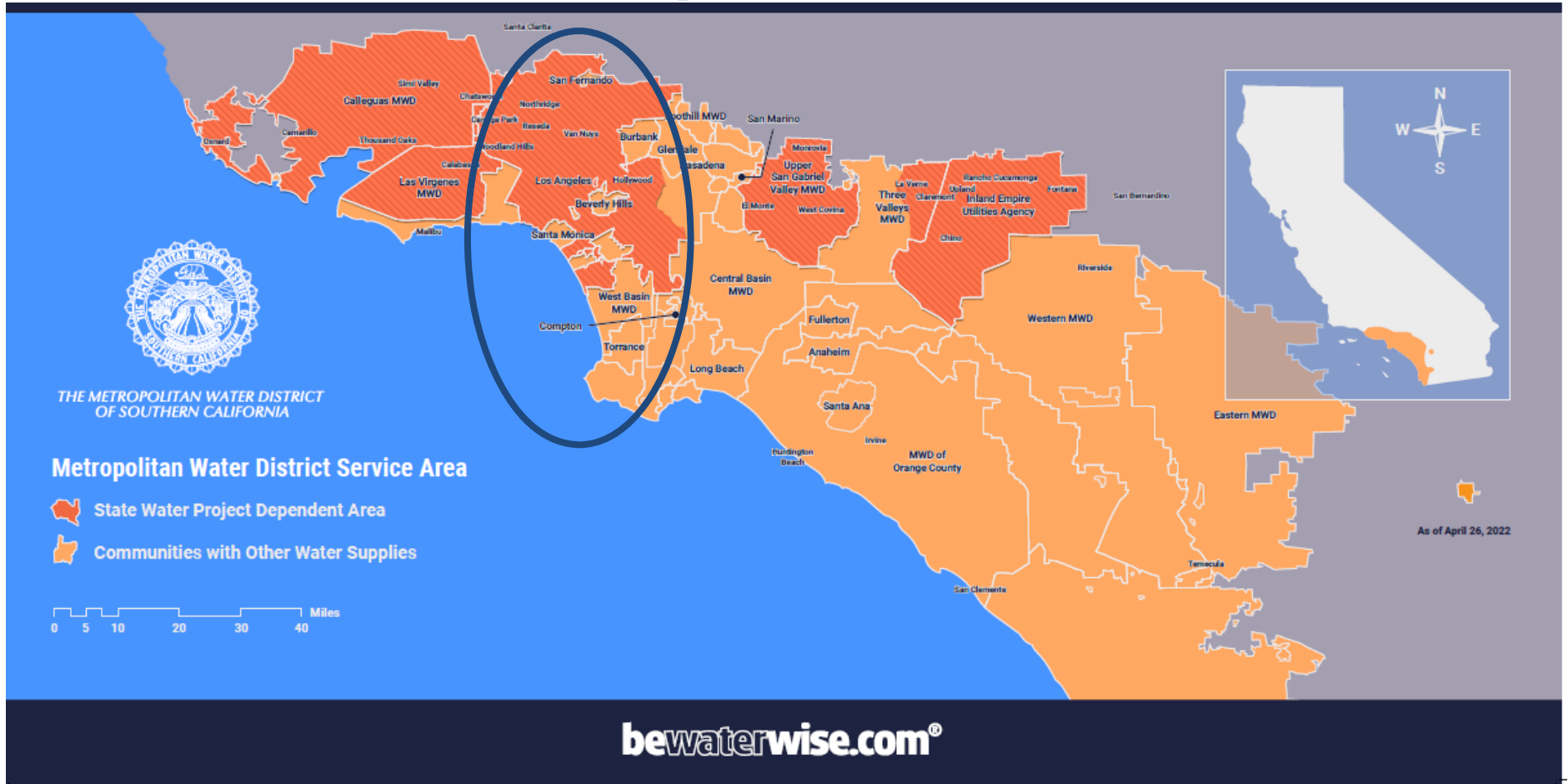
Historical LADWP Sources of Supplies



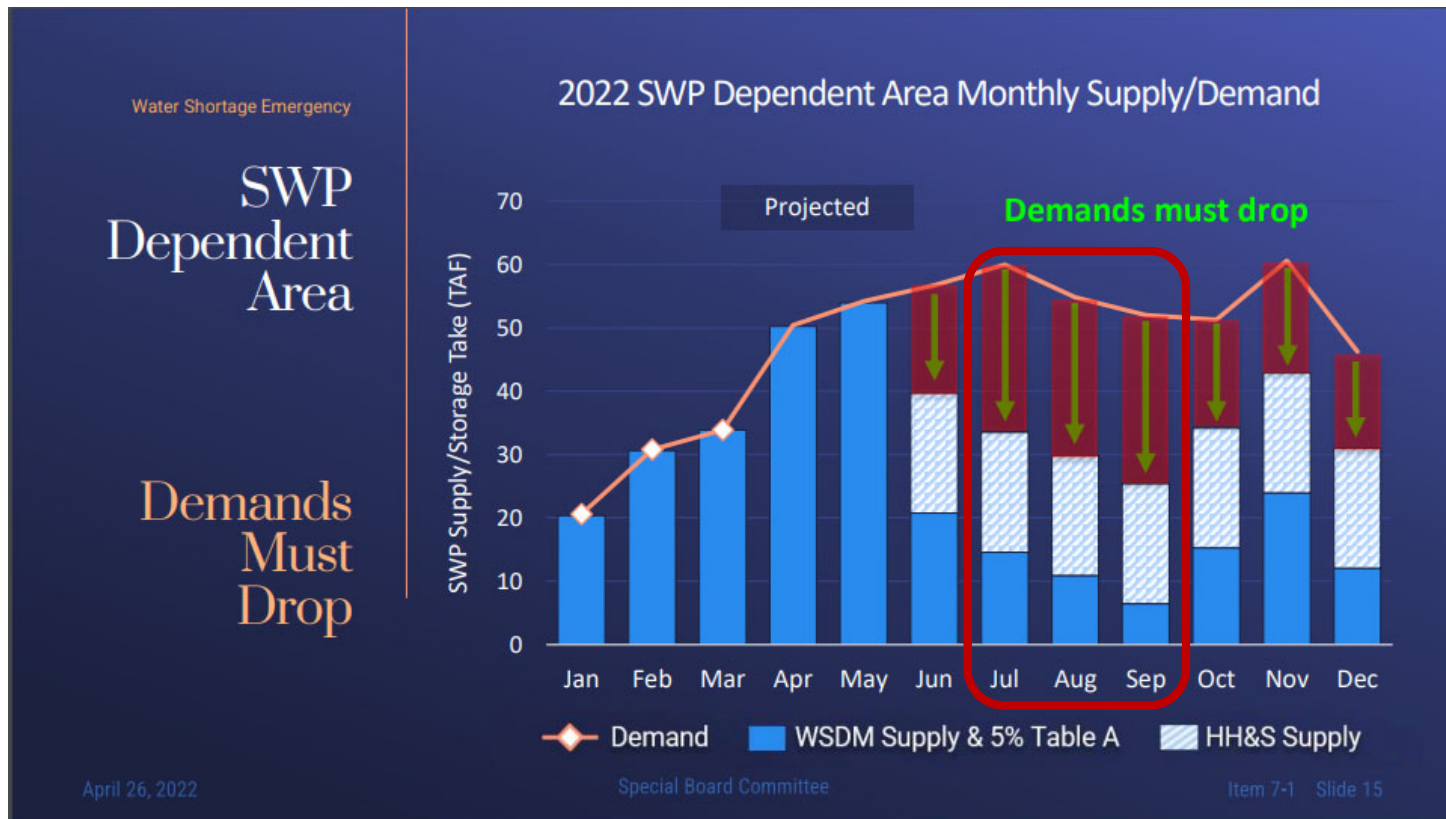
Third Consecutive Dry Year



SWP Dependent Areas



MWD Projected SWP Supplies



MWD Board Approved Resolution

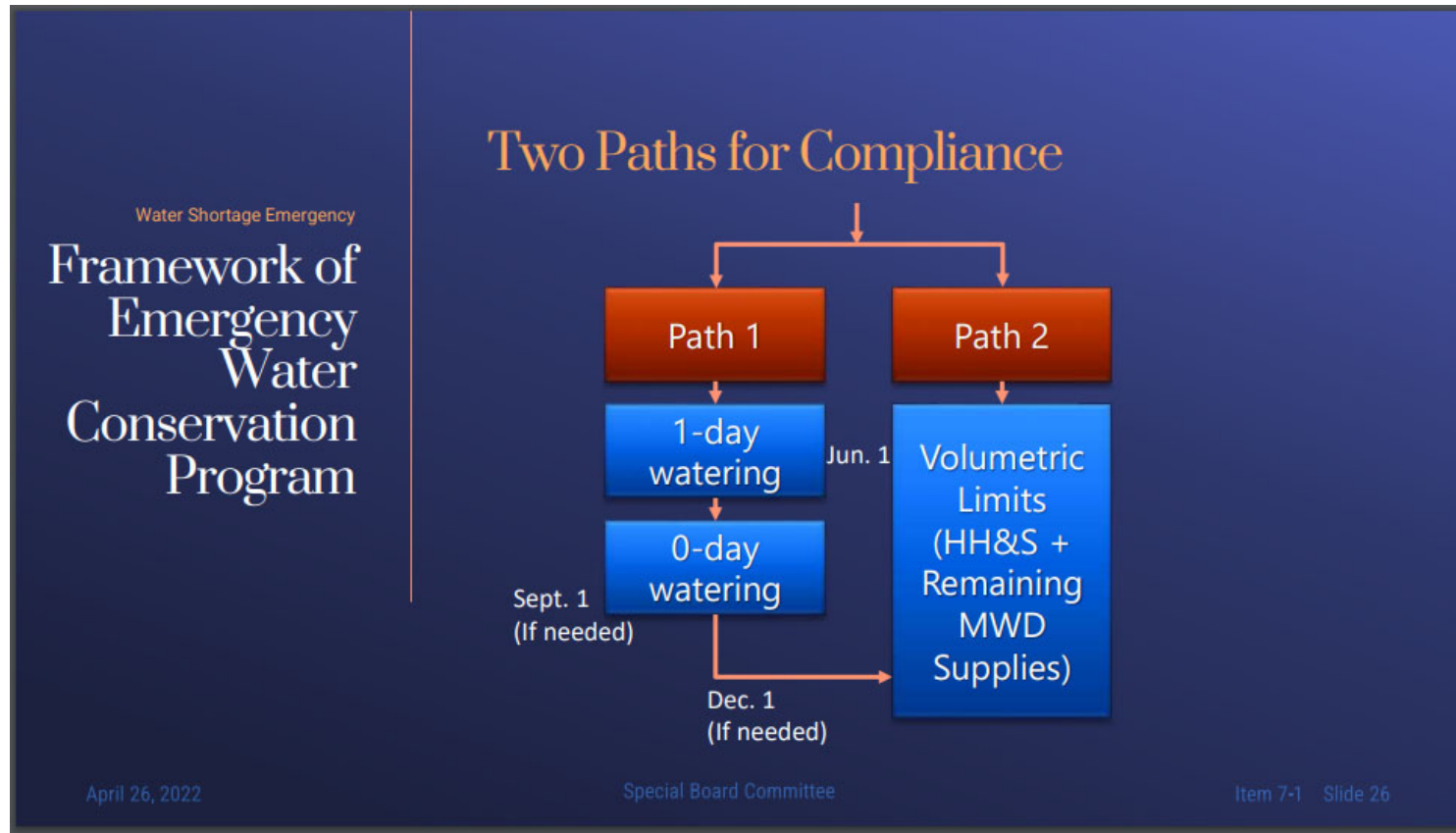
Water Shortage Emergency

Water Shortage Emergency Condition

Water Shortage Emergency Condition

- Public Hearing
- Water Code Section 350
 - Declared when ordinary demands cannot be satisfied without depleting water for human consumption, sanitation, and fire protection
 - Conserve the water supply for the greatest public benefit with priority for human health and safety
 - Establish priorities in the use of water for other purposes
- Result: Limit non-essential, outdoor use

MWD Water Conservation Program



Water Conservation Ordinance

PHASE 1 (PERMANENT):

- No water should flow off your property;
- No water should leak from any pipe or fixture;
- No irrigation is allowed within 48 hours after a measurable rain event;
- No hosing of driveways, sidewalks, or other surface unless for immediate safety or sanitary reasons;
- No washing of vehicles using a hose without a self-closing nozzle
- All outdoor watering is prohibited from 9:00 a.m. to 4:00 p.m.

PHASE 2 (CURRENT):

- Limiting outdoor watering to 3-days a week and 8 minutes per station per watering day.

PHASE 3:

- Limiting outdoor watering to 2-days a week and 8 minutes per station per watering day.
- Recommend use of pool covers to decrease water loss from evaporation.
- Recommend washing of vehicles at commercial car wash facilities.

PHASE 4:

- Limiting outdoor watering to 1-day a week and 8 minutes per station per watering day.
- Pool covers required.
- Washing of vehicles at commercial car wash facilities.
- No filling of decorative fountains, ponds, and lakes.



PHASE 5:

- No outdoor watering.
- No filling of residential pools/spas

Thank You

Questions?

Virginia Wei

Virginia.Wei@ladwp.com

(213) 367-3220



ladwp.com