



Stormwater Capture and Groundwater Remediation

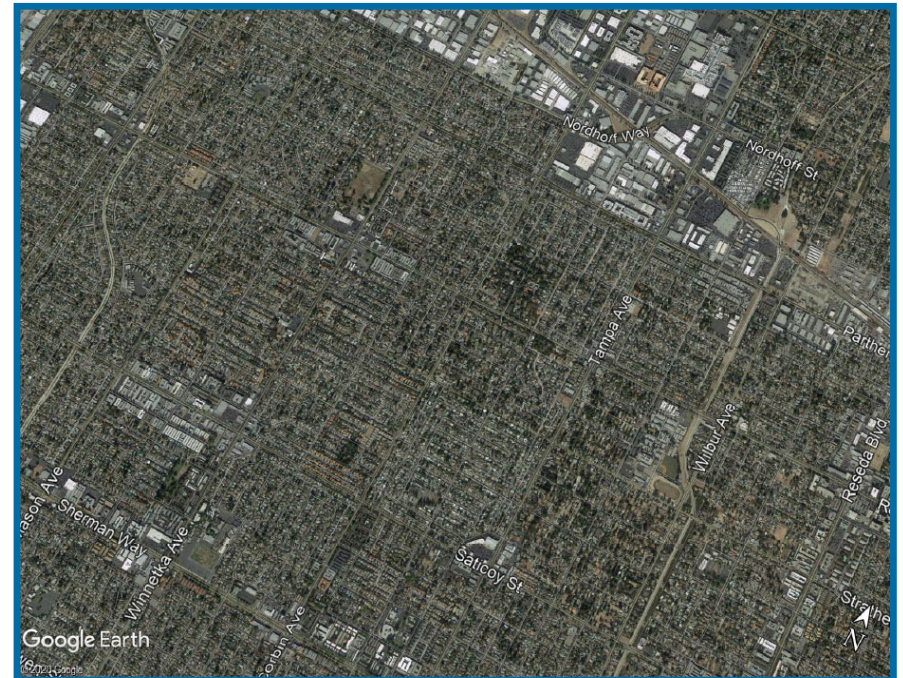
DWP-NC Advocacy Committee

March 4, 2023

LA's History with Stormwater



1924



2018

Urbanization in the San Fernando Valley

Watershed Management Approach

- Recharge San Fernando Groundwater Basin
- Reuse systems
- Diversion to water reclamation plant
- Secure Measure W and grant funds
- Forge new partnerships
- Multi-benefit approach



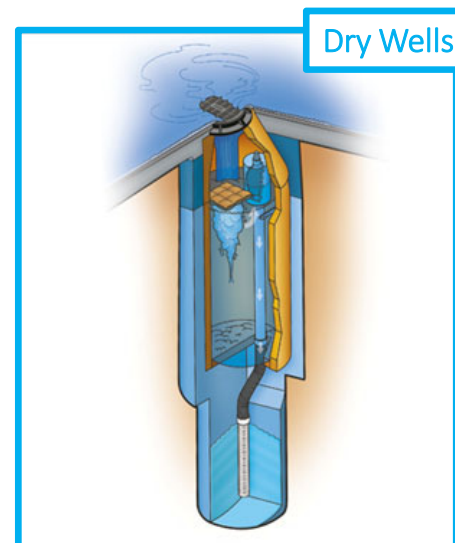
Projects – Centralized vs. Distributed



Centralized



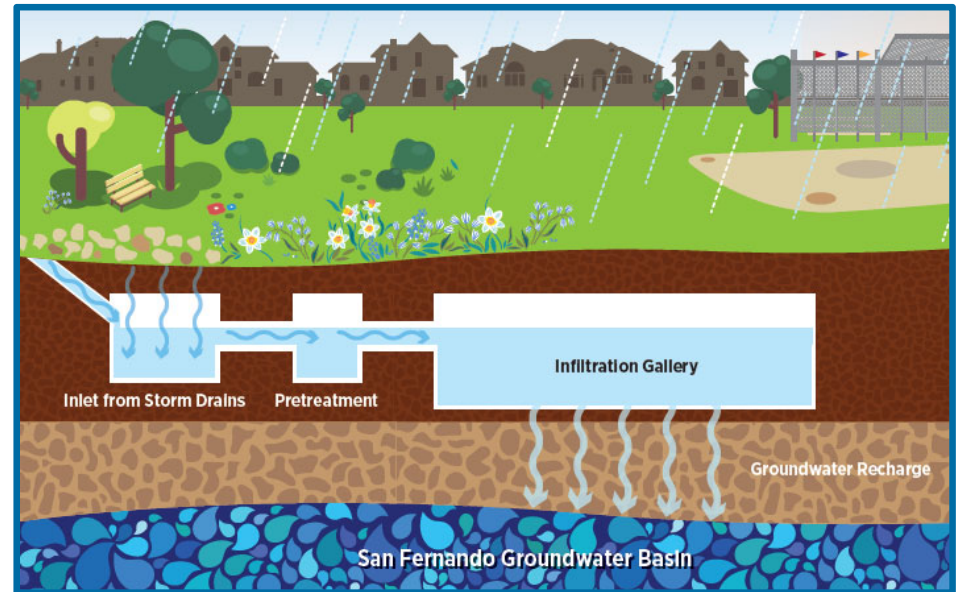
Distributed



Projects – Centralized



Tujunga Spreading Grounds
Enhancement Project



Stormwater Capture Parks Program
Cross Section Example

Projects – Distributed

- Capture < 100 AFY
- Green street projects
 - Bioswales, drywells, trees, new pavement
 - Transportation improvements
 - Enhances aesthetics
 - Mitigates flooding
 - Usually within public right-of-way
 - San Fernando Valley Distributed Projects



Woodman Avenue Green Street

Multi-Benefits of Stormwater Capture



Partnerships

LACFCD: Spreading Grounds



Metro: Orange Line Infiltration Project



LASAN: Green Street Projects



City of San Fernando: San Fernando Regional Park Infiltration Project

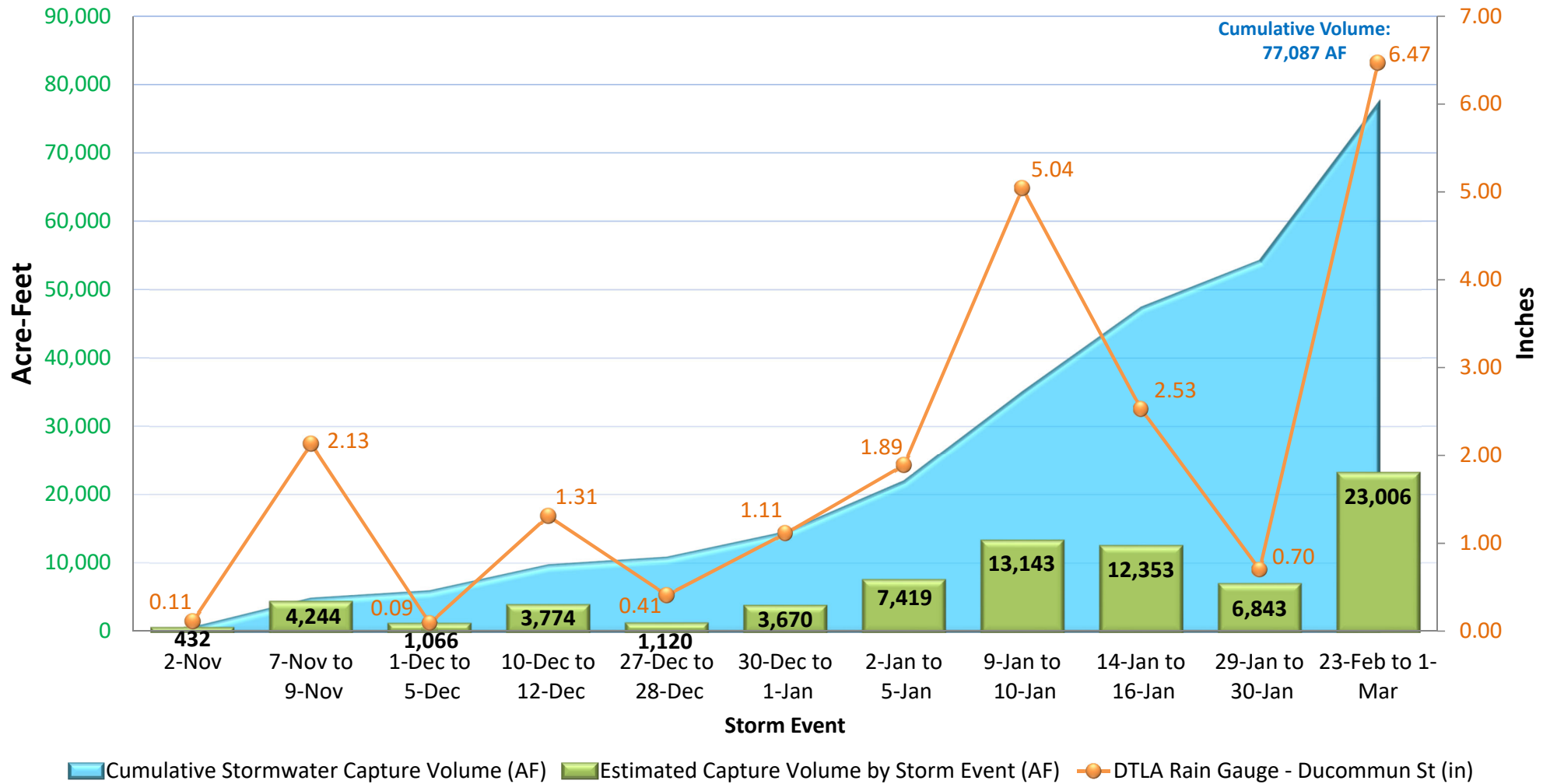


Partnerships



ladwp.com

WY 22-23 Estimated Stormwater Capture Volume by Storm Event



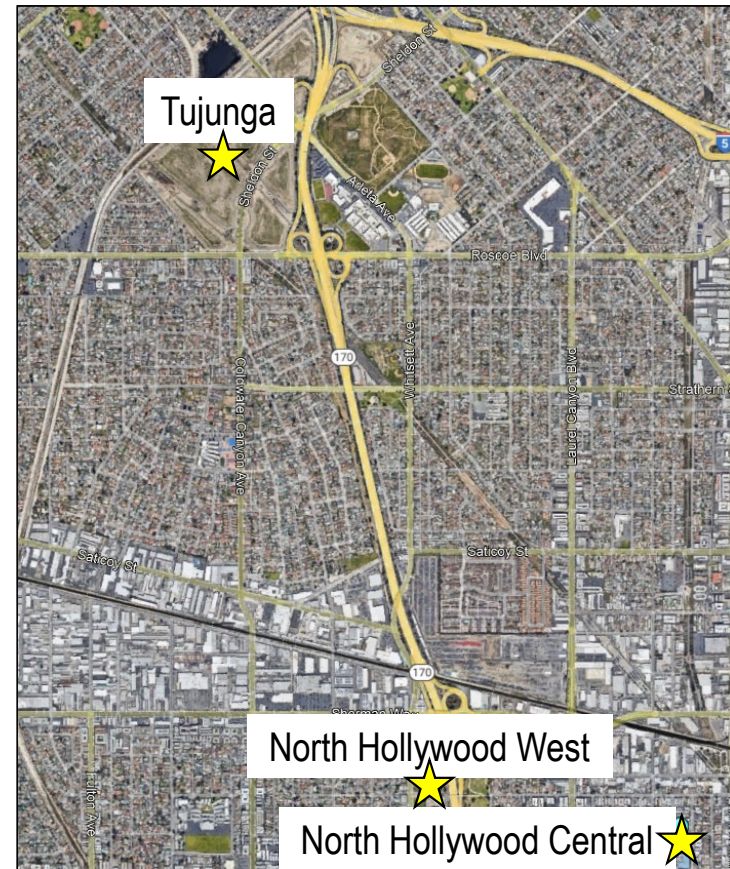
San Fernando Groundwater Basin Remediation Program

Project Sites

- North Hollywood West
- North Hollywood Central
- Tujunga

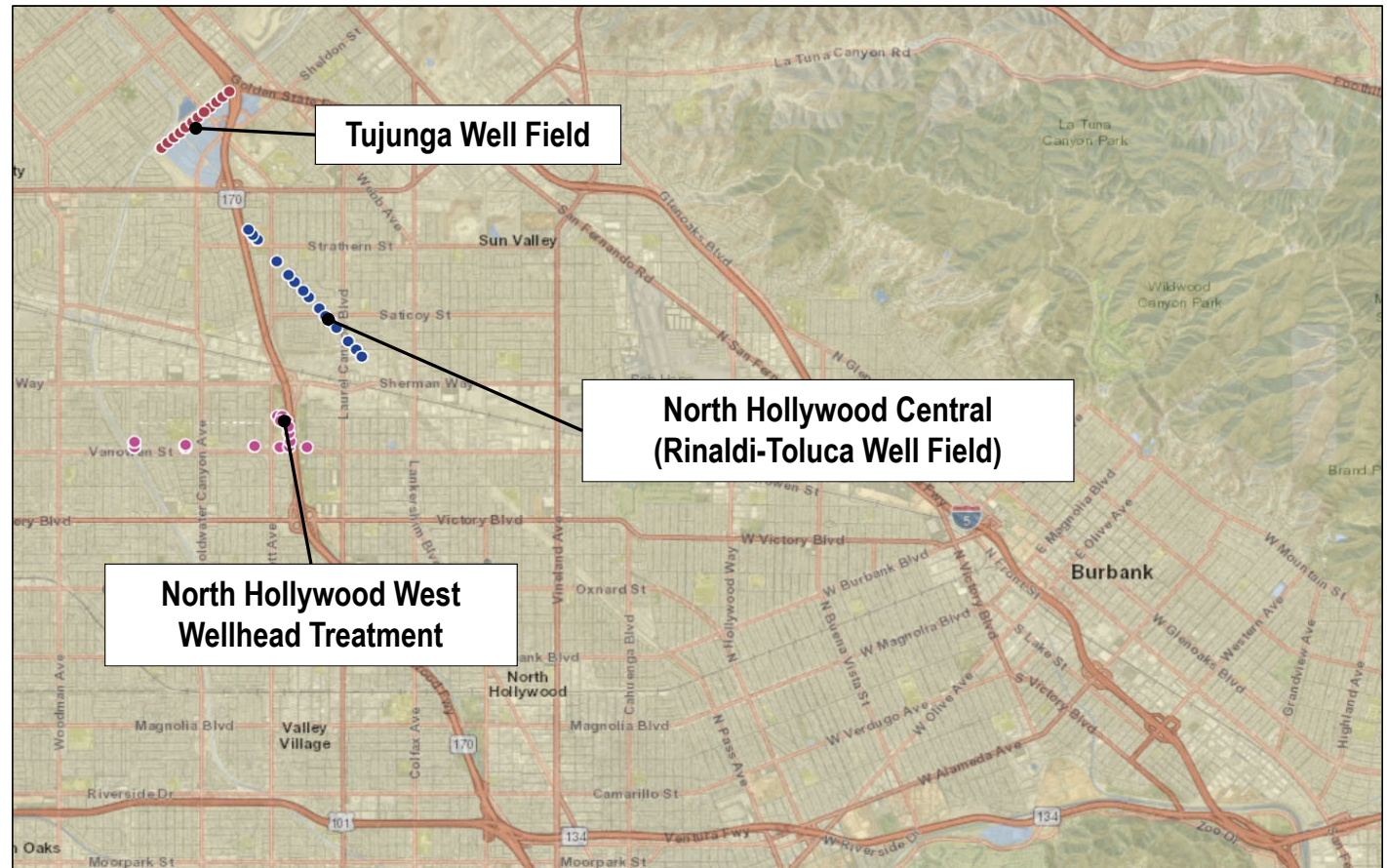
Program Objectives

- Protect Public Health and Environment
- Limit Migration of Contaminants
- Remove Contaminants
- Restore beneficial use of the San Fernando Groundwater Basin

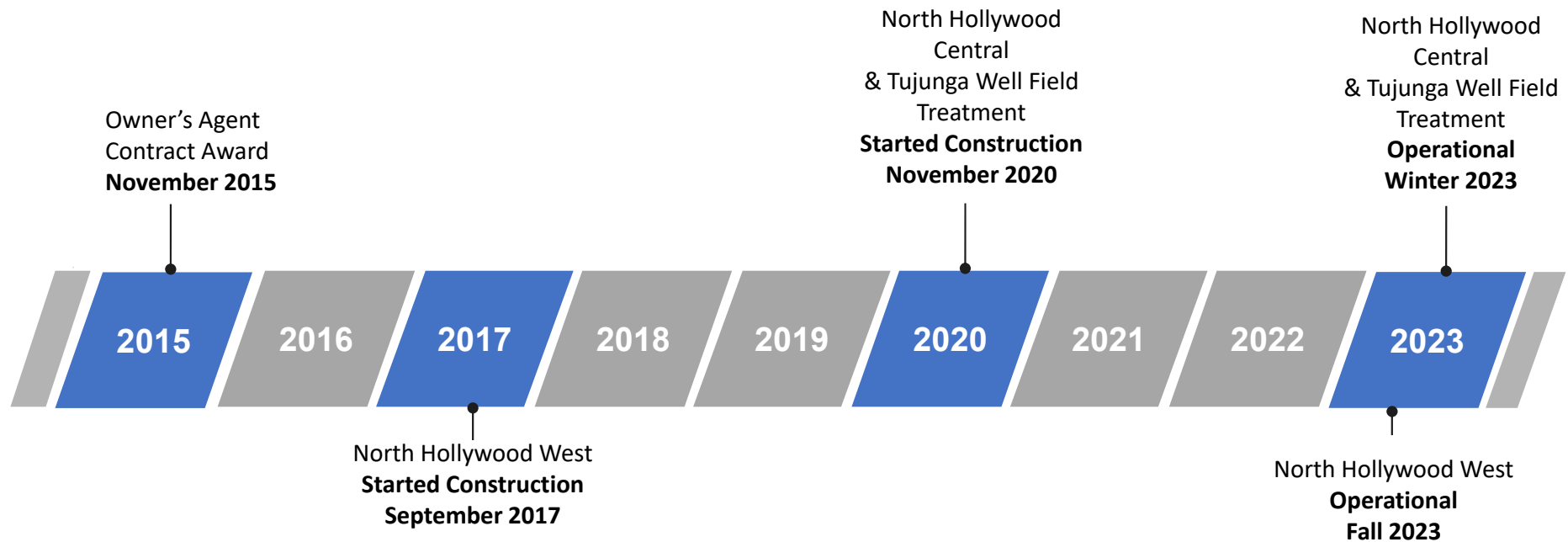


What is LADWP doing and why is it important?

- Groundwater typically 10% of supply
- 115 total groundwater wells.
- Only 41 reliable due to contamination.
- Restoration of supply



Program Schedule



For more information

LADWP > About Us > Water > Groundwater Remediation

Water

Past & Present

Facts & Figures

Public Outreach

Sources of Supply

Los Angeles Aqueduct

Water Quality

L.A.'s Drinking Water Quality Report

Projects

Sustainable Groundwater Management Act

Groundwater Remediation

Contact Us

Recycled Water

Water Conservation

Rates

Site Feedback

Groundwater Remediation

Remediation of the San Fernando Groundwater Basin

The San Fernando Groundwater Basin (San Fernando Basin [SFB]) provides an important source of groundwater supply for the Cities of Los Angeles, Burbank, and Glendale. The SFB acts as a large, natural underground water reservoir.

The City of Los Angeles holds a prior and paramount pueblo right to the SFB. This includes the right to the surface waters of the Los Angeles River and all the native groundwater in the SFB. The City also has the right to store and recapture imported and recycled water in the SFB for later use.

Remediating the SFB is essential to maximizing underground water storage. This is important to advancing the City's local water supplies and to reducing our reliance on imported water.

As part of the necessary remediation activities, LADWP completed the SFB Groundwater System Improvement Study (GSIS) in 2015. This six-year study characterized the groundwater basin contamination in the SFB. A copy of the study is available at the link below.

Based on the results of the study, LADWP is implementing three response actions within the most productive Northern SFB Well Fields – North Hollywood West, North Hollywood Central, and Tujunga Well Field. Specific project information can be found in the tabs below.

San Fernando Groundwater Basin - Remediation Program Summary

- For additional questions/concerns, [Contact Us](#) →, regarding the remediation projects under Construction
- North Hollywood Central – Latest Updates

Task	Schedule	Description	Location
Concrete Placements	5/9 – 6/3	Construction traffic and concrete placement equipment visible.	Hinds, South of Dehougne
Concrete Placements	5/9 – 6/3	Construction traffic and concrete placement equipment visible.	Morella, South of Dehougne
Material Backfill	5/9 – 6/3	Construction equipment compacting material.	Interior East side and South side of project limits.
Excavation	5/9 – 6/3	Construction equipment, and concrete placement equipment visible.	Hinds, South of Dehougne
Hinds Pipeline Construction	5/9 – 6/3	Utility work in the street, Monday – Saturday, 7am – 7pm	Hinds, South of Dehougne

Ladwp.com/remediation

Remediation@ladwp.com



Questions?