

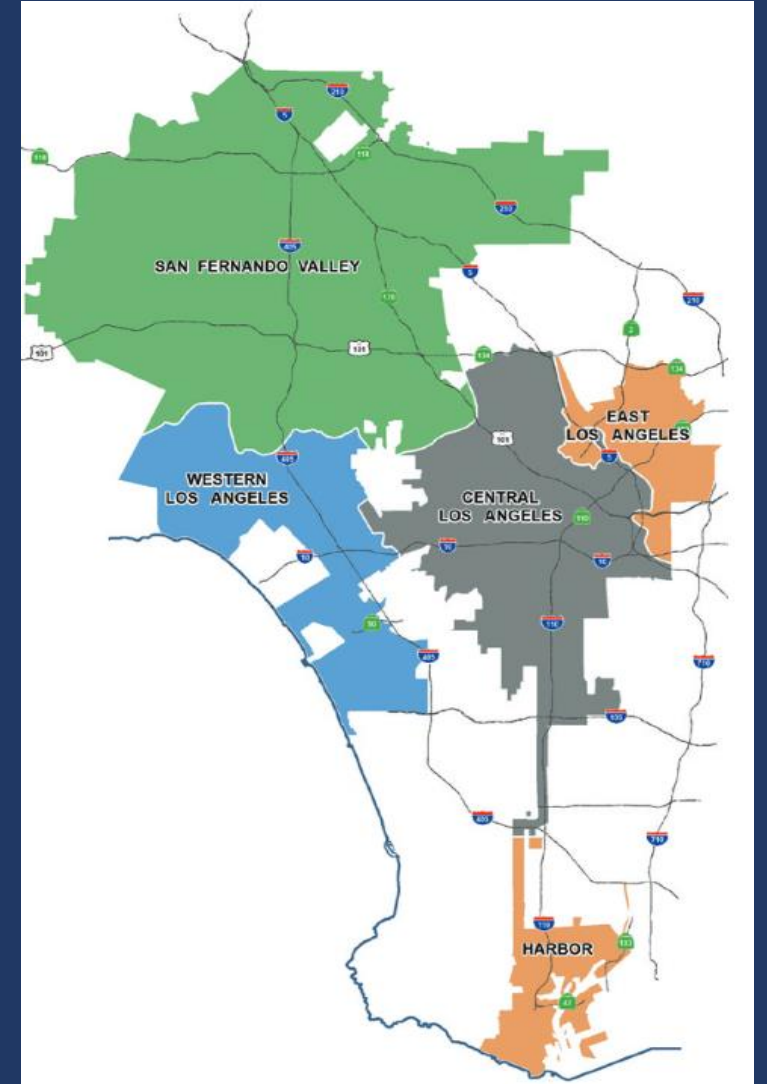


# Overview of Water Supplies and Ongoing Challenges

DWP-NC MOU Oversight Committee Meeting  
June 3, 2023

# LADWP Is the Largest Municipal Utility In the Nation

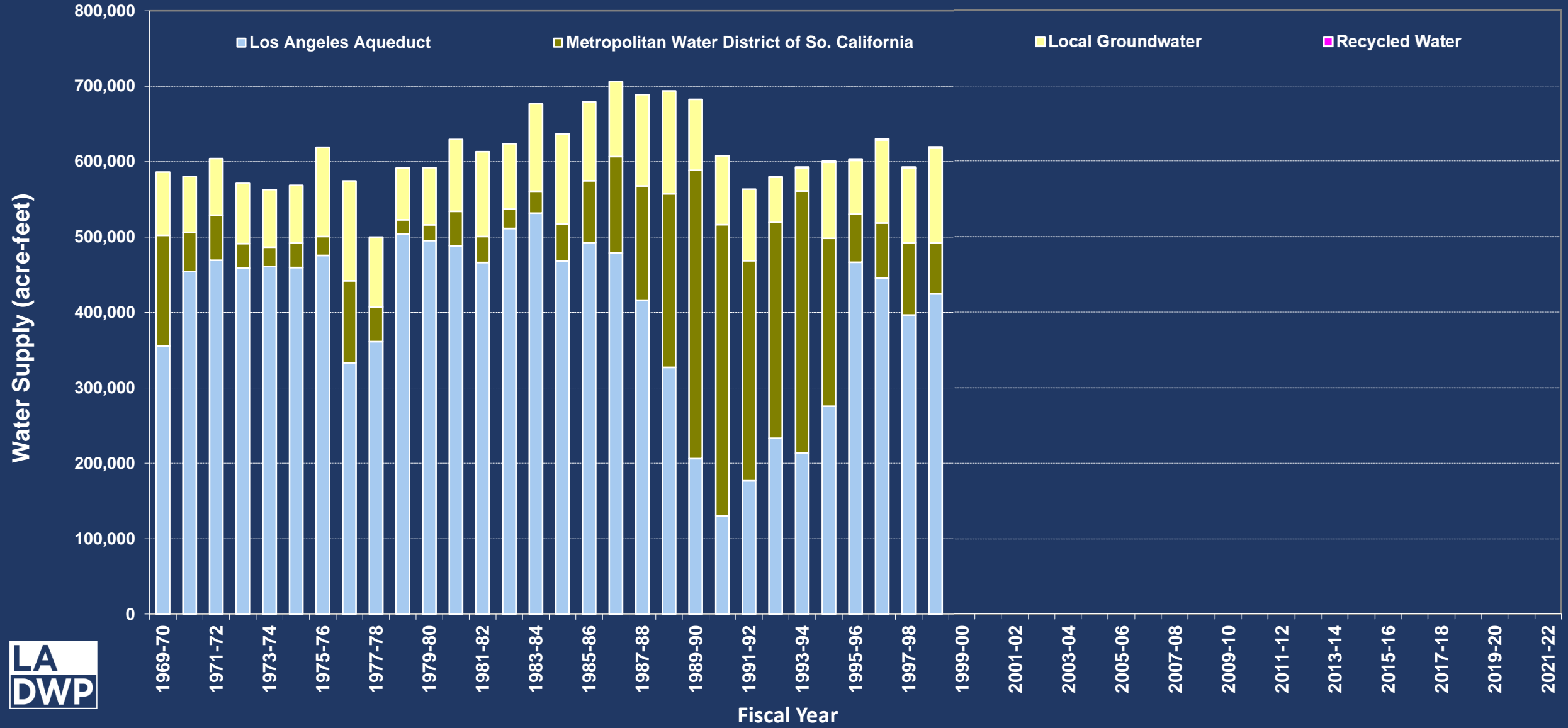
- Provide water and power service to ~4 million people
- Serve drinking water and recycled water to an area of approximately 473 sq. mi.
- Deliver ~450 million gallons of water delivered per day – 500,000 acre-feet per year



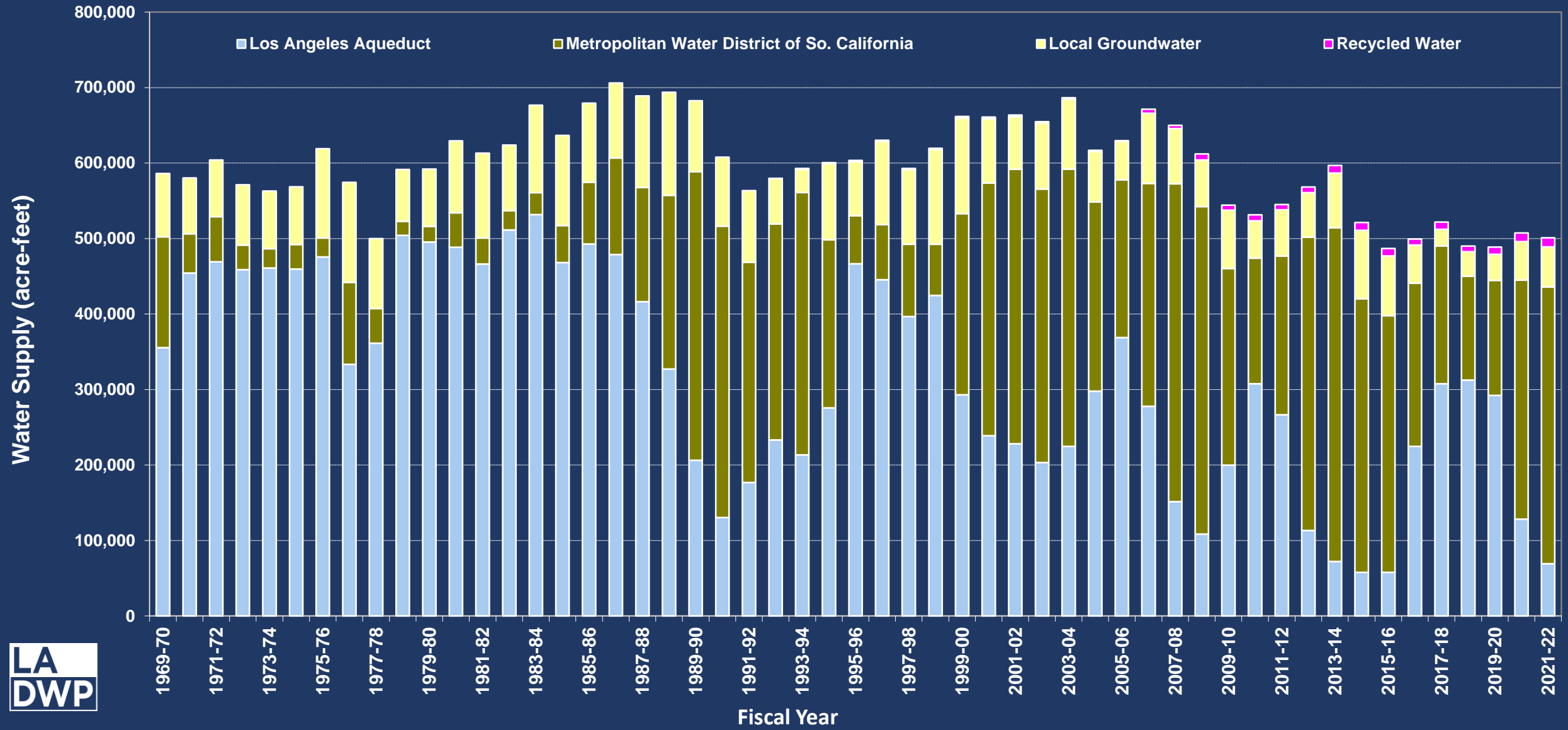
# Los Angeles Water Supply Portfolio Is Diverse



# LAA Supplies Are Foundational For LA Water Supply Reliability



# LADWP's Water Supply Mix Is Evolving – Increased Reliance on MWD





# Challenges Impact All Water Sources – Supply Diversity Is Critical to Maintaining Reliability



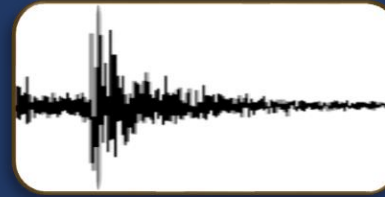
**Climate Change**



**Bay-Delta Uncertainty**



**Local Groundwater Contamination**



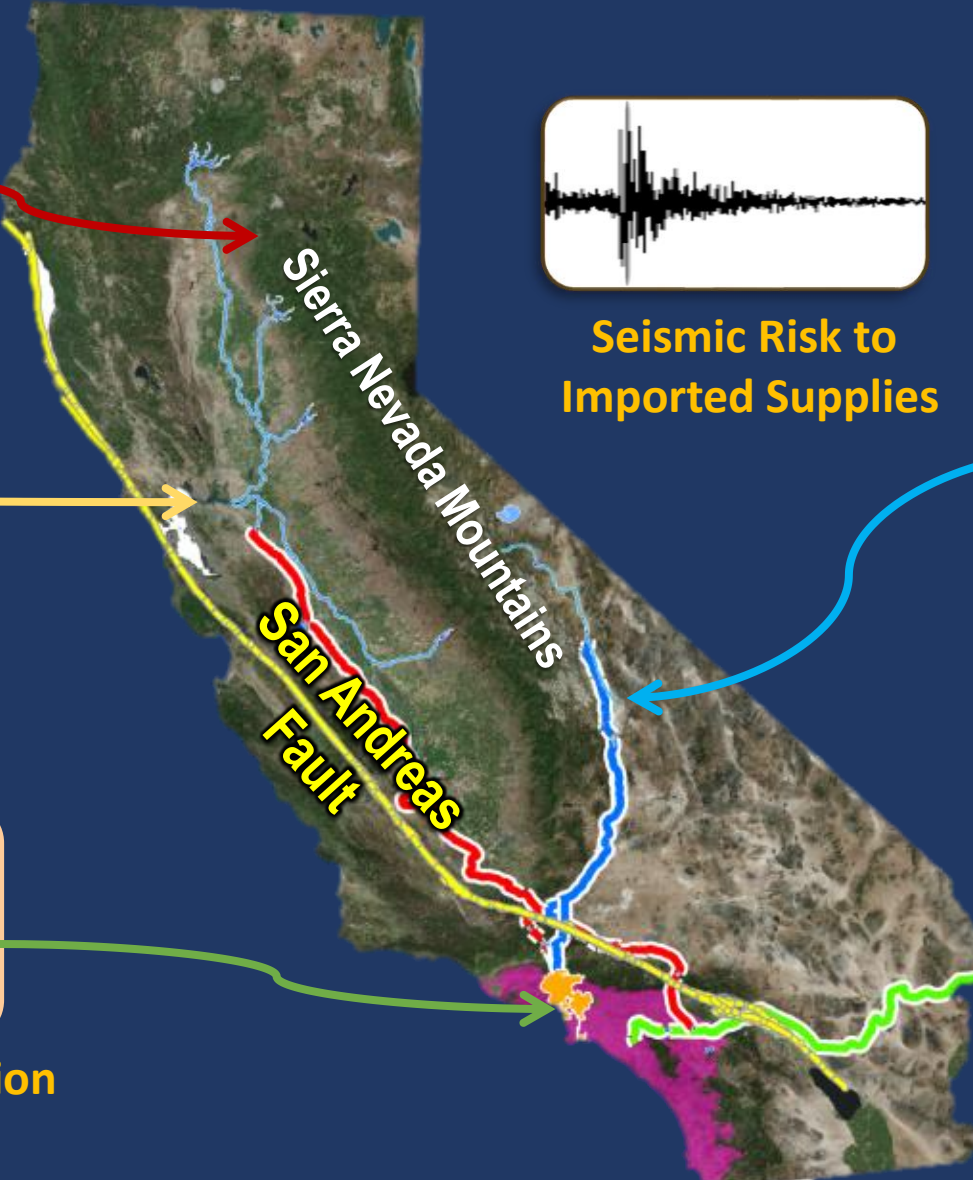
**Seismic Risk to Imported Supplies**



**Los Angeles Aqueduct**



**Colorado River Aqueduct**

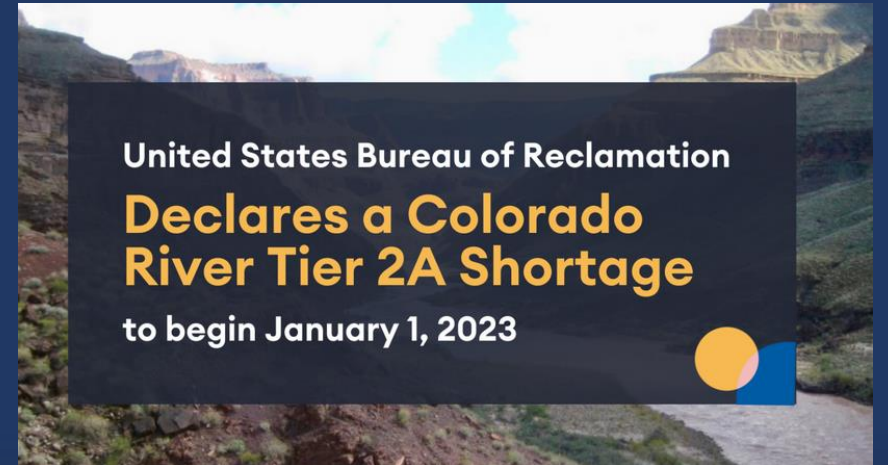


# MWD Challenged With Unprecedented Supply Shortages

News for Immediate Release\_\_

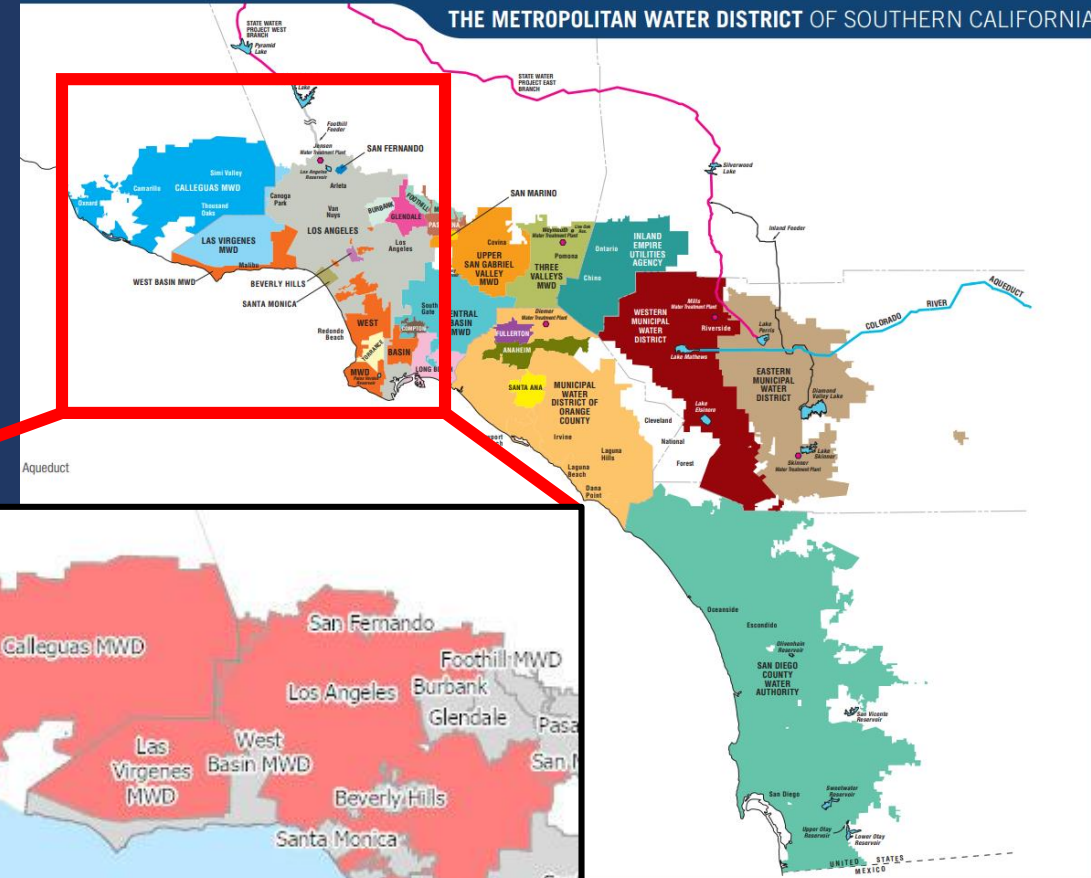
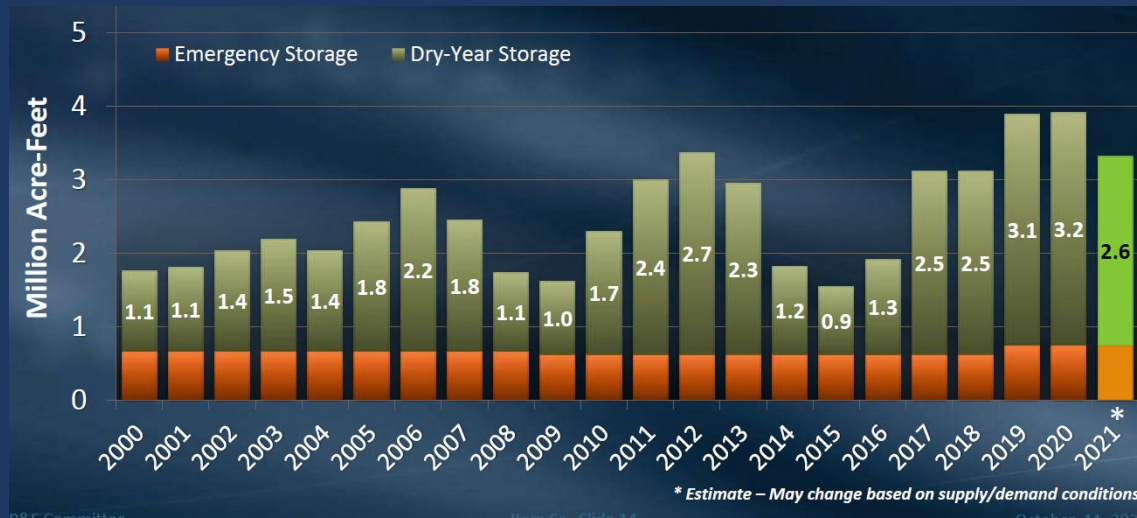
## Emergency Drought Restrictions Go Into Effect For Six Million Southern Californians

June 1, 2022



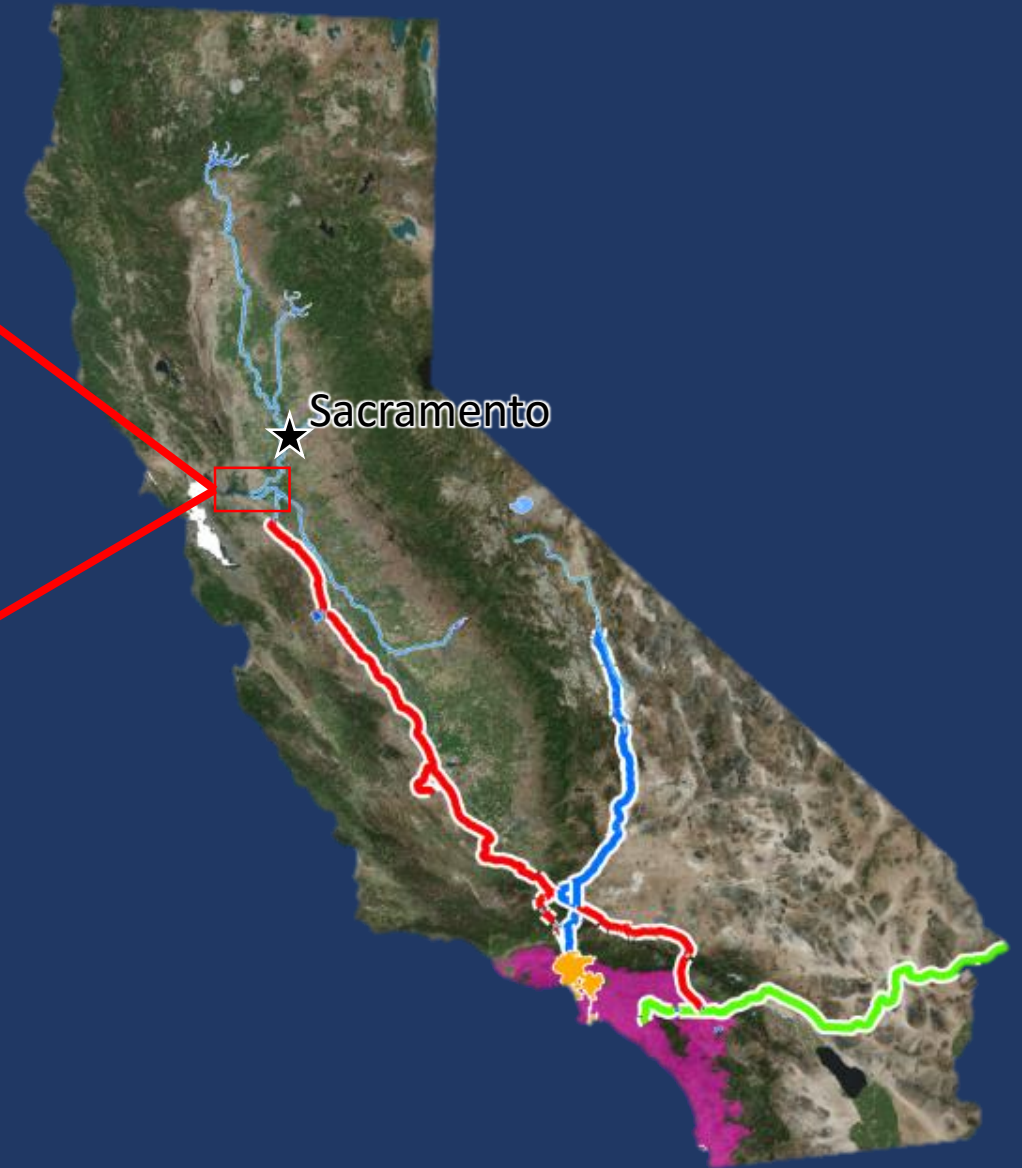


# Isolated Supply Shortage Highlight MWD System Vulnerabilities





# Bay Delta Is A Critical Water Hub for California







- Drinking Water for 27+ Million People
- Irrigation for half of the fruits and vegetables produced in the US
- Valuable Ecosystem

# Bay Delta Faces Many Challenges That Delta Conveyance Project Seeks to Address

Public Draft EIR  
Project Objectives

## The Project Purposes

|  |   |  |
|--|---|--|
|    | <b>CLIMATE<br/>RESILIENCY</b>           | Addresses climate change, extreme weather and rising sea-levels in the Delta for the SWP                                     |
|    | <b>SEISMIC<br/>RESILIENCY</b>           | Minimizes health/safety risk to public from earthquake-caused reductions in water delivery quality and quantity from the SWP |
|    | <b>WATER<br/>SUPPLY<br/>RELIABILITY</b> | Restores and protects ability to deliver SWP water in compliance with regulatory and contractual constraints                 |
|  | <b>OPERATIONAL<br/>FLEXIBILITY</b>      | Provides SWP operational flexibility to improve aquatic conditions and manage risks of additional future constraints         |

# Delta Conveyance Project Features and Proposed Alignments

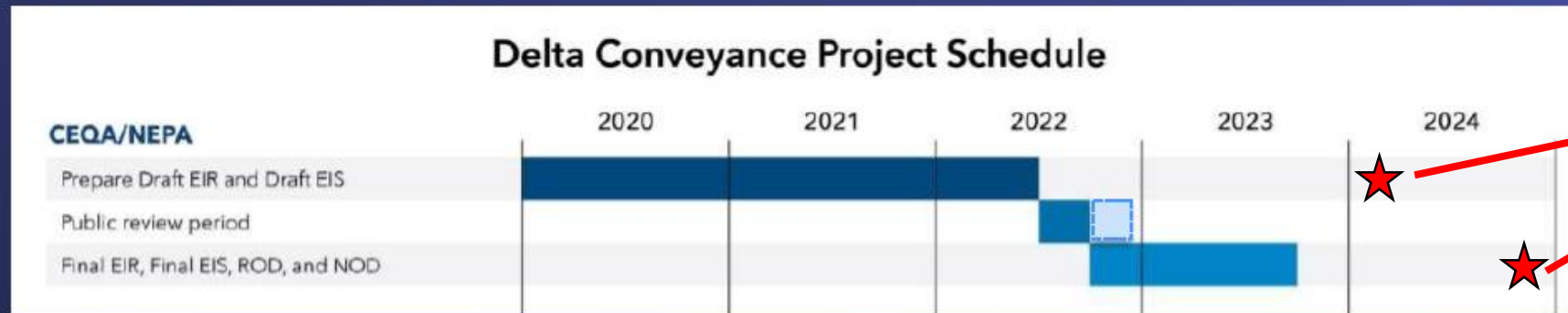
|  | California WaterFix (2017)                     | Proposed Delta Conveyance (2020)            |
|--|--|---|
| <b>Conveyance</b>                          | Two tunnels, 35 miles each                     | One tunnel, 45 miles                        |
| <b>Capacity</b>                            | 9,000 cfs<br>(Note: BDCP was 15,000 cfs)       | 6,000 cfs                                   |
| <b>Number of Intakes</b>                   | 3  | 2   |
| <b>Alignment</b>                           | Through center of Delta                        | Along east side, avoiding central Delta     |
| <b>Potential Agricultural Land Impact</b>  | Approximately 3,550 acres                      | Approximately 2,400 acres                   |
| <b>Construction Traffic on Highway 160</b> | Yes  | No  |
| <b>Forebays Needed</b>                     | Yes, 2   | None, connect directly to Bethany Reservoir |
| <b>Number of Barge Landings</b>            | 4  | None  |
| <b>Tunnel Shaft Launch Sites</b>           | Located at intakes and sites away from intakes | Located away from intakes                   |
| <b>Tribal Consultation</b>                 | Yes  | Yes, formally under AB 52                   |





# Delta Conveyance Project Undergoing Environmental Review, Board Action to Follow

## Delta Conveyance Project Planning Timeline



PWSC EIR Progress

## Future DCP updates to MWD Committee/Board<sup>1</sup>

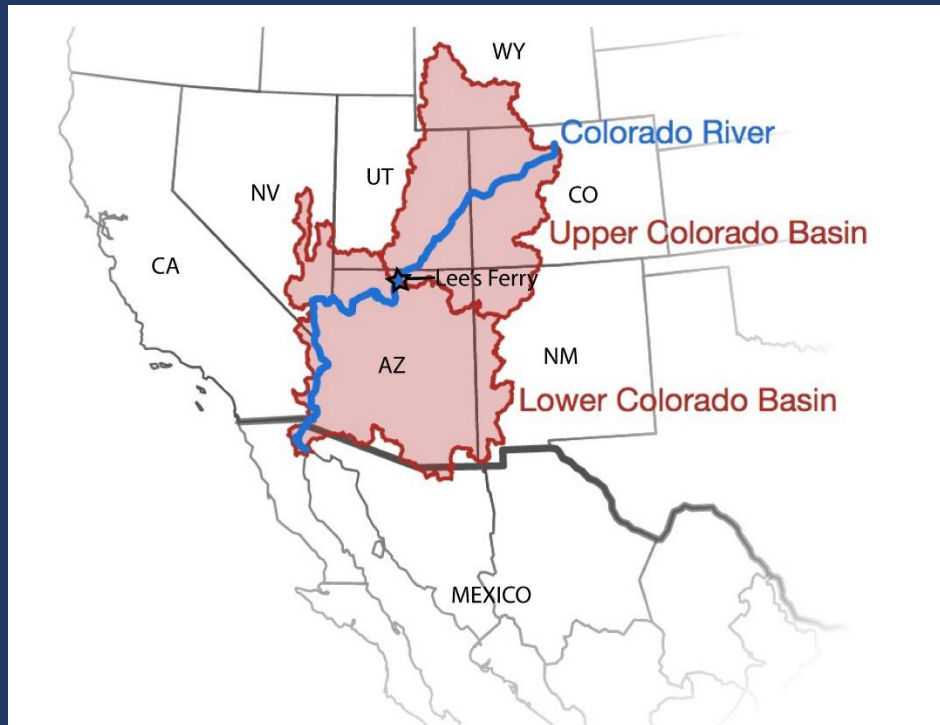
- Regular Delta Conveyance Project Updates (Ongoing)
  - Delta Conveyance Design & Construction Authority
  - Delta Conveyance Finance Authority
  - Project development (planning / permitting activities)
- Cost Estimate (Fall 2023 - Spring 2024)
- Cost Benefit Analysis (Fall 2023 - Spring 2024)
- Continued Project funding discussion and board deliberation (by mid 2024)

<sup>1</sup>Proposed Delta Conveyance Project timeline and dates provided above are subject to change



# Overallocation on Colorado River System Evident in Unprecedented Shortage Declaration

- Law of the River Overallocation
- Worst 23 year drought in 1,200 years
- 2007 Interim Guidelines expire Dec. 31, 2025



# Colorado River Actions Pending





# Supply Diversity Key to LADWP Water Supply Reliability Strategy

## Imported Supply



**Los Angeles  
Aqueducts**



**Metropolitan Water  
District**

## Local Supply



**Conservation / Water Use  
Efficiency**



**Stormwater**



**Groundwater  
Treatment**



**Purple Pipe**



**Operation NEXT**



**Groundwater  
Replenishment**

**Recycled Water**



Questions?